

# Parent Information Booklet and Home School Agreement

2025/2026

*Inclusivity,  
Wellbeing  
and  
High Expectations*







1      1 1      C C      C    C C                  1    1    1        1 1                  1 1      1      1                  1                  1

1

[illegible][illegible][illegible][illegible]

1    1                 1 1 1                 1    1 1 1                 1    1 1 1 1                 1    1 1                 1    1 1 1

1    1 1                 1 1                 1    1                 1    1                 1 1                 1 1                 1 1

Chris Roberts

C

# Contents

[illegible]

# Meet Our Key Staff...

1

**Mr Doherty:**  
Headteacher



**Mrs Katie Holness**  
Deputy Headteacher:  
Student Achievement



**Mr Matt Hutton**  
Deputy Headteacher:  
Quality of Education



**Mr Steve Fenner**  
Assistant Headteacher:  
Inclusion/SENCO



**Ms Vicky Brown**  
Assistant Headteacher:  
Behaviour and Attitudes



## ALNS Ethos and the School Day

2



2 2

2 2 2

2 2 2

Rede 1

The diagram illustrates a network structure with nodes and connections. The nodes are arranged in a grid-like pattern, with some nodes highlighted in green and others in purple. The connections are represented by lines of varying thickness, indicating different levels of connectivity. The diagram is labeled 'Rede 1' in the top left corner.

2 2 2

1	1		1	1	1		1	1	1		1	1	1		1	1	1	1	1	1		1	1		1	1
1			1	1		1		1	1		1	1		1	1		1	1	1	1	1	1	1	1	1	1
		1	1	1			1	1		1	1		1	1		1	1		1	1	1	1	1	1	1	1
1	1				1	1	1	1		1	1		1	1	1	1		1	1	1	1		1	1		1
1		1	1		1	1	1		1	1	1	1	1	1		1	1	1	1	1		1	1	1	1	1
1		1	1	1		1	1		1	1	1	1	1		1	1	1		1	1	1	1	1	1	1	1
1			1	1	1		1	1	1	1	1	1	1		1	1	1		1	1	1	1	1	1	1	1
1			1	1	1		1	1	1	1	1	1	1		1	1	1		1	1	1	1	1	1	1	1

$$\begin{array}{cccccccccccc} \mathbf{2} & & \mathbf{2} & & \mathbf{1} & \mathbf{1} & & \mathbf{1} & \mathbf{1} & & \mathbf{1} & & \mathbf{1} & & \mathbf{1} \\ \mathbf{1} & \mathbf{1d} & \mathbf{TL} & & \mathbf{1} & & \mathbf{1} & & \mathbf{1} & & \mathbf{1} & & \mathbf{1} & \mathbf{1UL} & & \mathbf{1} & \mathbf{1UL} & & \mathbf{1} \end{array}$$

1		2	2	2	2			
1	1	1	1	1	1d RL	1	1d WL	1
	1	1	1	1	1	1	1	

2 2 2 2 2 2 aRae aRaf

8.45am	Tutor Time (Community Circles on Mondays)
9.05am	Lesson 1
9.55am	Lesson 2
10.45am	First Break
11.10am	Lesson 3
12.00pm	Lesson 4
12.50pm	Second Break
1.20pm	Lesson 5
2.10pm	Lesson 6
3.00pm	End of Day



[illegible][illegible][illegible]

- 1 1 1 1L1 1 1 1  
 1 1 1 1 1 1 1 1M  
 1 1 1 1 1 1 1  
 1 1 1 1 1 1 1 1  
 1 1 1 1 1 1 1 1

1    1    1                 1 1                 1    1                 1    1    1  
         1 1                 1    1                 1                 1                 1  
 1                 1 1                 1                 1                 1    1    1  
 1    1                         1 1                 1    1    1    1    1  
         1                         1    1    1                 1    1    1 1  
         1                 1 1                 1    1                 1    1  
 1    1                 1 1                 1    1 1                 1    1  
         1    1                 1

4

The diagram shows a grid of 1s arranged in a pattern that suggests a larger shape. The green triangle is on the left, and the purple triangle is on the right. They are separated by a gap. The grid consists of 1s arranged in a pattern that suggests a larger shape, with the triangles filling in some of the missing 1s.

The diagram shows a grid of numbers with two overlapping triangles. The green triangle has vertices at (1,1), (2,2), and (3,3) with a value of 1 at its center. The purple triangle has vertices at (2,2), (3,3), and (4,4) with a value of 1 at its center. The grid contains numbers 1 and 0.



[illegible]

## Uniform Rules

### Years 7-10

- Hairstyles should be moderate with natural colour\*  
\*No hairstyle should be below a Grade 2
- Black sweatshirt or cardigan with the school logo\*  
\*This is not an optional item. Students will be allowed to choose whether to wear their jumper, but they must have it with them during every lesson
- Plain full-length tailored trousers (not leggings) or black skirt with the school logo\*  
\*Black tailored, knee length shorts may be worn at any point in the year
- Plain white or black socks or plain black tights
- Shoes must be all black and polishable\*  
\*Including the soles and any labels or logos

### Jewellery and Accessories Rules

- Hair ties/bands should be plain and discreet
- Nail varnish or fake nails are not allowed in Years 7-10
- Earrings must be plain/gold silver studs or sleepers\*  
\*Sleepers must be no more than 1cm diameter
- Students may wear a maximum of one earring in each ear (lobe only)
- A very small, discreet, flat stud can be worn in the nose - Either plain silver, gold or clear\*  
\*Nose rings are NOT permitted
- Jewellery **MUST** be removed for practical subjects
- Make up is not allowed in Years 7-9\*  
\*Discreet make up is allowed in Years 10 and 11



***a*    *a***

**1**

1    1 1       1 1    1           1           1    1           1 1       1    1    1

    1           1 1    1 1       1 1 1    1       1 1           1    1 1    1       1       1 1    1

1       1 1           1 1       1       1 1    1           1 1    1       1    1       1 1    1

    1 1       1           1       1       1           1    1       1 1    1           1       1 1

1           1 1       1 1    1       1 1       1           1



## PE Kit Expectations

### Compulsory:

- House PE Shirt
- Black shorts\*
- Trainers\*\*
- White ankle socks (for indoor)

### Optional:

- Black tracksuit bottoms or leggings\*
- Black school PE sweatshirt (school jumpers are not acceptable)
- Shin pads

*\*We prefer that shorts are worn for all lessons, however in the colder months, plain black tracksuit bottoms will be acceptable. Students may wear black sports leggings as an alternative to tracksuit bottoms.*

*\*\*Plimssoles/converse style trainers are **not** suitable for sports and therefore not permitted.*

- Long hair must be tied up and all jewellery removed for health and safety
- We expect you to bring your kit to every lesson
- Please ensure your kit is labelled with your name and tutor group
- If you have temporarily misplaced your kit or it is in the wash, it is acceptable as a 'one off' to bring some spare kit





**Cycling to school?**  
You **MUST** wear a helmet  
and bring a bike lock!

# Equipment

## REQUIRED:

- Student Planner with timetable clearly stuck in
- Reading book
- Books/folders for that day's lessons
- Locker key
- Packed lunch/money on ParentPay
- Scientific calculator  
*(Casio Classwizz FX-83GTCW)*
- Bag large enough for everything  
*(We recommend rucksack style)*
- Chromebook  
*(If you have leased one)*
- PE Kit  
*(If you have PE that day)*
- Pencil case, containing:



Must have	Useful
<ul style="list-style-type: none"><li>• Black or blue pens</li><li>• Pencil(s)</li><li>• Rubber</li><li>• Ruler</li></ul>	<ul style="list-style-type: none"><li>• Pink/green pens</li><li>• Colouring pencils</li><li>• Highlighter</li><li>• Pair of compasses</li><li>• Glue stick</li><li>• Protractor</li></ul>

## OPTIONAL, BUT USEFUL:

- Refillable water bottle









Diagram illustrating a 4x4 grid of letters (S) and numbers (2) arranged in a pattern:

S	S	S	S
S	SS	SS	
S	S	S	S
S	S		

Below the grid, the numbers 2, 2, 2 are written under the first three columns respectively.

$\begin{array}{cccccccccccccccc} & 7 & 7 & 7 & & 7 & 7 & & 7 & 7 & & 7 & 7 & & & \\ & & 7 & 7 & & 7 & 7 & & 7 & & 7 & & 7 & 7 & 7 & \\ 7 & & & 7 & 7 & & 7 & & & & & & & & & \\ & & & & & & & & & & & & & & & \\ 7 & & & 7 & & 7 & 7 & 7 & & 7 & 7 & 7 & 7 & & 7 & \\ & & 7 & & 7 & 7 & & 7 & 7 & & 7 & 7 & & 7 & 7 & 7 \\ & 7 & 7 & 7 & 7 & 7 & & 7 & 7 & 7 & & 7 & 7 & 7 & & \\ 7 & & 7 & & 7 & 7 & 7 & & 7 & 7 & 7 & & 7 & 7 & 7 & \\ & & & 7 & & 7 & & 7 & 7 & & 7 & & 7 & & 7 & 7 \\ 7 & 7 & & & 7 & 7 & 7 & 7 & & 7 & 7 & & 7 & & & \end{array}$

[illegible][illegible]

6

3 x 2

2 + 2 + 2



A stylized illustration of a hand holding a smartphone. The phone's screen displays the ClassCharts logo, which consists of a colorful icon of four people holding hands and the text 'ClassCharts' in a sans-serif font. The background is white, and the phone and hand are depicted in a dark grey color.

[illegible]

The diagram consists of a grid of letters 'A' and 'a'. Above the grid, there are several symbols: a single dot, a pair of dots, a horizontal line, and a vertical line. Below the grid, there are several symbols: a horizontal line, a vertical line, a horizontal line with a dot, a vertical line with a dot, a horizontal line with a dot and a vertical line, and a horizontal line with a dot and a vertical line with a dot. The letters 'A' and 'a' are arranged in a pattern that suggests a code or a message.

$\bullet$  A      A    AA       A       A    A    A    A

~~~~~             A             A             A    A    A    A    A

~~~~~          A             A             A             A    A    A

• A A A A A A A A A A

~~~~~ A

• A A A AA A A A A A  
A A A A A A A A A A  
A A A A A A A A A A  
A A A A A A A A A

•

• A A AA A A A A A A A A A

•      A      AA      A A A A      A A      A      A A      A A      A A

A A      A      A

• A A AA A A A A A A A A A A A A

[illegible][illegible]

• A A AA A A A A A A A A A A



## Additional Student Support

[illegible]

- 
- A 12x12 grid of dots with some dots replaced by the number 8. The pattern of 8s is as follows (row, column):
- | Row | Col 1 | Col 2 | Col 3 | Col 4 | Col 5 | Col 6 | Col 7 | Col 8 | Col 9 | Col 10 | Col 11 | Col 12 |
|-----|-------|-------|-------|-------|-------|-------|-------|-------|-------|--------|--------|--------|
| 1   | 8     |       |       |       |       |       |       |       |       |        |        |        |
| 2   |       | 8     |       | 8     | 8     | 8     |       | 8     | 8     | 8      | 8      |        |
| 3   |       | 8     | 8     | 8     |       | 8     | 8     |       | 8     |        |        |        |
| 4   | 8     |       | 8     | 8     | 8     | 8     |       | 8     | 8     | 8      |        | 8      |
| 5   |       |       |       |       |       |       |       |       |       |        |        |        |
| 6   |       |       | 8     |       | 8     | 8     |       | 8     |       | 8      | 8      | 8      |
| 7   |       |       | 8     | 8     |       | 8     | 8     |       | 8     | 8      | 8      | 8      |
| 8   |       |       | 8     | 8     |       | 8     | 8     |       | 8     | 8      | 8      | 8      |
| 9   | 8     |       | 8     | 8     | 8     |       | 8     | 8     |       | 8      |        |        |
| 10  |       |       | 8     |       | 8     |       | 8     |       | 8     | 8      | 8      | 8      |
| 11  |       | 8     | 8     |       | 8     |       | 8     | 8     | 8     | 8      | 8      | 8      |
| 12  |       |       | 8     |       | 8     |       | 8     | 8     | 8     | 8      |        |        |

D       D   D

- 

D                      D

-

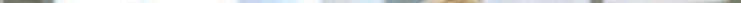
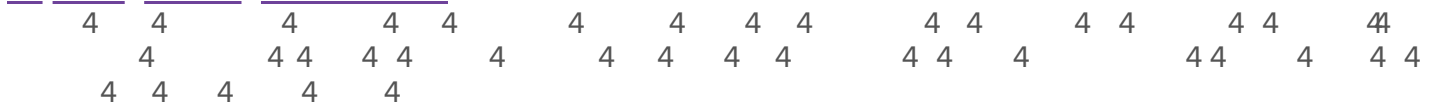


The diagram illustrates a network structure with nodes and edges. A horizontal line at the top is labeled 'M'. Below it, a series of nodes are connected by edges. The network is divided into several regions highlighted in green and purple. Labels within the diagram include '1MHP', '1NH', 'RH', 'HH', '1K', and '1H'. The nodes are represented by small circles, and the edges are lines connecting them. The highlighted regions are semi-transparent shapes that cover parts of the network.

[illegible]

4      4    4                  4                  4    4    4                  4                  4    4                  4    4                  4    4    4                  4    4    4

       4    4    4

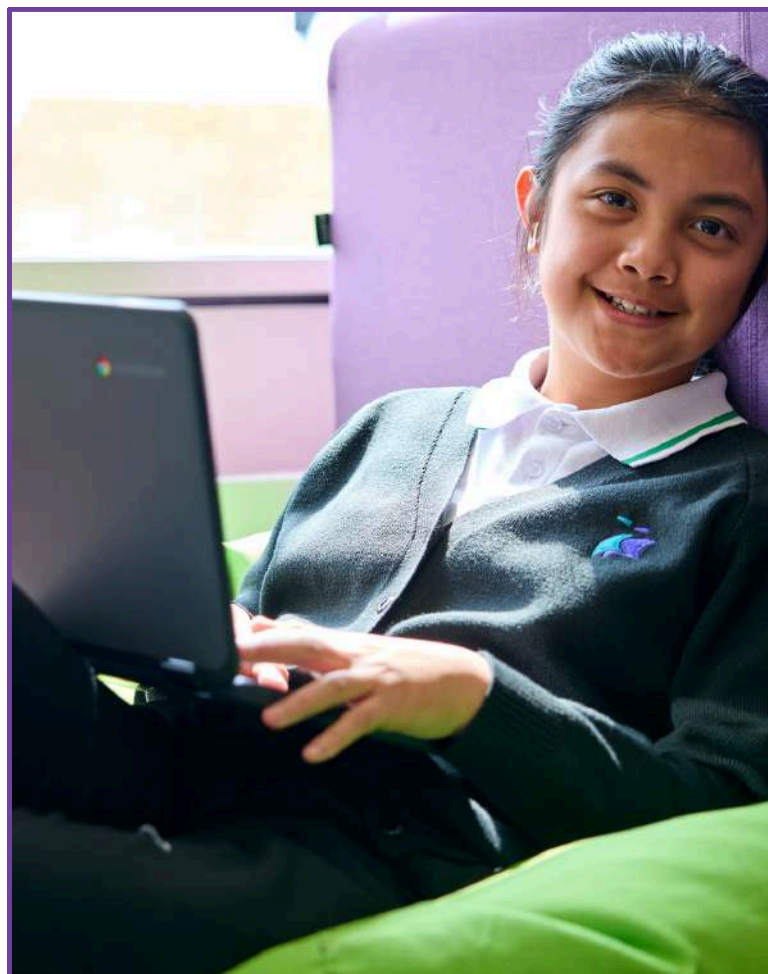

$$\begin{array}{cccccccccccccccc} & 4 & & 4 & & 4 & & & 4 & & 4 & & 4 & & & \\ 4 & & & & 4 & & & & 4 & & 4 & & & 4 & & 4 \\ 4 & & 4 & & & 4 & 4 & & 4 & 4 & & & & 4 & & 4 \\ 4 & 4 & & & 4 & 4 & & 4 & & 4 & & & & & & \end{array}$$


4 4 4 4 4 4 4 4 4 4 4 4 4

[illegible][illegible][illegible]



2 2 2 2 2 2 2 2 2 2 2 2 2 2 2



| C |   | C C |   |   |   |   |   |   |  |
|---|---|-----|---|---|---|---|---|---|--|
| 2 | 2 | 2   | 2 | 2 | 2 | 2 |   |   |  |
| 2 | 2 | 2   |   |   |   |   |   |   |  |
| 2 | 2 |     |   |   |   |   |   |   |  |
| 2 | 2 |     |   |   |   |   |   |   |  |
| 2 | 2 |     |   | 2 |   | 2 | 2 | 2 |  |
| 2 | 2 |     |   | 2 |   |   |   |   |  |
| 2 | 2 |     |   | 2 | 2 | 2 | 2 | 2 |  |
| 2 | 2 |     |   | 2 |   | 2 | 2 |   |  |

C C    C C

2    2    2    2    2    2    2    2    2    2    2

2    2                  a

            2       Ub

            2 W     NU

            2    2    2       2       2    2       2    2    2    2

[illegible]

|   |   |   |   |   |   |   |   |      |   |   |   |    |   |        |   |    |
|---|---|---|---|---|---|---|---|------|---|---|---|----|---|--------|---|----|
| 1 | 1 | 1 | 1 | 1 | 1 | 1 | 1 | 10G  | 1 | 1 | 1 | 1l | 1 | 1MGMR1 | 1 | 1W |
| 1 | 1 | 1 | 1 | 1 | 1 | 1 | 1 | 1VPR | 1 | 1 | 1 | 1  | 1 | 1      | 1 | 1  |

[illegible]

|        |   |   |   |   |   |   |   |   |   |   |   |   |   |   |   |   |
|--------|---|---|---|---|---|---|---|---|---|---|---|---|---|---|---|---|
|        | 1 |   | 1 |   | 1 |   | 1 | 1 |   |   |   | 1 |   |   |   |   |
| •      | 1 |   | 1 | 1 |   |   | 1 |   | 1 |   | 1 | 1 |   | 1 |   | 1 |
| 111111 | 1 |   |   | 1 | 1 |   | 1 |   |   |   | 1 | 1 |   |   | 1 | 1 |
| 111111 | 1 |   |   | 1 |   | 1 |   | 1 | 1 |   |   | 1 | 1 |   |   | 1 |
| 111111 |   | 1 |   | 1 | 1 | 1 |   |   | 1 | 1 |   |   |   | 1 | 1 |   |
| 111111 |   |   | 1 | 1 |   | 1 |   | 1 |   |   | 1 | 1 |   |   | 1 | 1 |
| 111111 |   | 1 | 1 |   |   | 1 | 1 | 1 |   |   | 1 | 1 |   |   | 1 |   |
| 111111 |   |   |   | 1 |   | 1 | 1 |   |   | 1 | 1 |   |   | 1 |   |   |
| •      |   | 1 | 1 |   | 1 |   | 1 | 1 |   | 1 | 1 |   |   | 1 | 1 | 1 |
| •      |   | 1 |   |   | 1 |   | 1 |   |   |   |   |   |   |   |   |   |
| •      | 1 |   |   | 1 |   | 1 | 1 |   | 1 | 1 |   | 1 | 1 |   |   | 1 |
| •      |   |   | 1 | 1 |   | 1 |   | 1 | 1 | 1 |   |   |   | 1 |   | 1 |

[illegible]

1 1 1 1 1 1 1MPR 1 1 1 1 1 1 1 1 1 1

1 1 1 1 1 1 1 1 1 1

|    |  |   |   |   |  |   |   |   |   |    |   |   |  |    |   |    |  |   |   |    |
|----|--|---|---|---|--|---|---|---|---|----|---|---|--|----|---|----|--|---|---|----|
| 11 |  | 1 | 1 | 1 |  |   | 1 | 1 | 1 |    | 1 | 1 |  |    | 1 | 1  |  | 1 | 1 | 11 |
| 11 |  |   | 1 | 1 |  |   | 1 |   | 1 | 1  | 1 |   |  | 1  |   | 11 |  | 1 | 1 | 11 |
| 11 |  | 1 |   | 1 |  | 1 | 1 | 1 |   | 1  |   |   |  | 11 | 1 | 1  |  |   | 1 |    |
| 11 |  |   | 1 |   |  | 1 | 1 |   |   | 1  |   |   |  | 1  | 1 | 1  |  | 1 | 1 |    |
| 11 |  | 1 |   | 1 |  |   |   |   |   | 1  |   |   |  | 1  |   |    |  |   | 1 |    |
| 11 |  | 1 |   | 1 |  |   |   |   |   | 11 |   |   |  | 1  |   |    |  |   | 1 |    |

11 1 1 1 1 1 1 1 1 1 1

11 1 1 1 1 1 1 1 1 1 1

11 1 1 1 1 1 1 1 1 1 1

A Venn diagram illustrating the relationship between three sets, A, B, and C. Set A is represented by a green circle, set B by a purple circle, and set C by a yellow circle. The regions where two or more sets intersect are shaded gray, representing the union of the sets.



| B B | B B | B         |
|-----|-----|-----------|
| 1   |     | P 1 1SMST |
| 1   | 1 1 | 1SMPe1    |
| 1   |     | 1SMPd1    |
| 1   | 1 1 | 1SMSPi    |
| 1   | 1   | 1SMPe     |
| 1   | 1   | 1SMSS     |
| 1   |     | 1SMSS     |
| 1 1 | 1   | 1SMST     |
| 1   | 1   | 1SMST     |

3 3 3

## Friends of ALNS

**B**                      **B**

1 1

- Official -

195 DAYS

TERM DATES 2025 - 2026

FINAL

PORTSMOUTH CITY COUNCIL

Programme of school term and holiday dates for LA and controlled schools

for the academic year 2025/2026

The School Year

Term Time

School Holiday

Bank Holidays

Autumn Term 2025

September

M

1

8

15

22

29

T

2

9

16

23

30

W

3

10

17

24

T

4

11

18

25

F

5

12

19

26

S

6

13

20

27

S

7

14

21

28

October

M

6

13

20

27

T

7

14

21

28

W

1

8

15

22

29

T

2

9

16

23

30

F

3

10

17

24

31

S

4

11

18

25

S

5

12

19

26

November

M

3

10

17

24

T

4

11

18

25

W

5

12

19

26

T

6

13

20

27

F

7

14

21

28

S

1

8

15

22

29

S

2

9

16

23

30

December

M

1

8

15

22

29

T

2

9

16

23

30

W

3

10

17

24

31

T

4

11

18

25

F

5

12

19

26

S

6

13

20

27

S

7

14

21

28

Spring term 2026

January

M

5

12

19

26

T

6

13

20

27

W

7

14

21

28

T

1

8

15

22

29

F

2

9

16

23

30

S

3

10

17

24

31

S

4

11

18

25

February

M

2

9

16

23

T

3

10

17

24

W

4

11

18

25

T

5

12

19

26

F

6

13

20

27

S

7

14

21

28

S

1

8

15

22

March

M

2

9

16

23

30

T

3

10

17

24

31

W

4

11

18

25

T

5

12

19

26

F

6

13

20

27

S

7

14

21

28

S

1

8

15

22

29

April

M

6

13

20

27

T

7

14

21

28

W

1

8

15

22

29

T

2

9

16

23

30

F

3

10

17

24

S

4

11

18

25

S

5

12

19

26

Summer Term 2026

May

M

4

11

18

25

T

5

12

19

26

W

6

13

20

27

T

7

14

21

28

F

1

8

15

22

29

S

2

9

16

23

30

S

3

10

17

24

31

June

M

1

8

15

22

29

T

2

9

16

23

30

W

3

10

17

24

T

4

11

18

25

F

5

12

19

26

S

6

13

20

27

S

7

14

21

28

July

M

6

13

20

27

T

7

14

21

28

W

1

8

15

22

29

T

2

9

16

23

30

F

3

10

17

24

31

S

4

11

18

25

S

5

12

19

26

August

M

3

10

17

24

31

T

4

11

18

25

W

5

12

19

26

T

6

13

20

27

F

7

14

21

28

S

1

8

15

22

29

S

2

9

16

23

30

Bank and public holidays 2025/2026

Christmas Day Holiday

Boxing Day Holiday

New Year's Day Holiday

Good Friday

25 December 2025

26 December 2025

01 January 2026

03 April 2026

Easter Monday

May Day Holiday

Spring Bank Holiday

Summer Bank Holiday

06 April 2026

04 May 2026

25 May 2026

31 August 2026

Key:

Term Time

School holidays

Bank Holidays

PORTSMOUTH SCHOOL TERMS AND HOLIDAYS

2025 – 2026

Programme of school term and holiday dates for LA and controlled schools

Autumn Term 2 Starts on Wednesday 03 September 2025 and ends on Friday 19 December 2025

(Half term from Monday 27 October to Friday 31 October 2025)

Spring Term 20 Starts on Monday 05 January 2026 and ends on Friday 27 March 2026

(Half term from Monday 16 February to Friday 20 February 2026)

Summer Term 1 Starts on Monday 13 April 2026 and ends on Wednesday 22 July 2026

(Half term from Monday 25 May to Friday 29 May 2026)

TERM

START DATE

END DATE

Autumn Term 2025

03 September 2025

19 December 2025

HALF TERM

27 October - 31 October 2025

TERM

START DATE

END DATE

Spring Term 2026

05 January 2026

27 March 2026

HALF TERM

16 - 20 February 2026

TERM

START DATE

END DATE

Summer Term 2026

13 April 2026

22 July 2026

HALF TERM

25 May - 29 May 2026

The above dates and calendar represent a full school year of 195 days. LA maintained and controlled schools are required to be open for pupils for at least 380 sessions (190 full days).

The other days are for In Service Training (INSET) Days and are to be decided at the discretion of individual schools.

Please also note that the first day of the Autumn Term in September 2026 will not be determined until the 2026/27 timetable has been consulted upon and approved in 2025.

